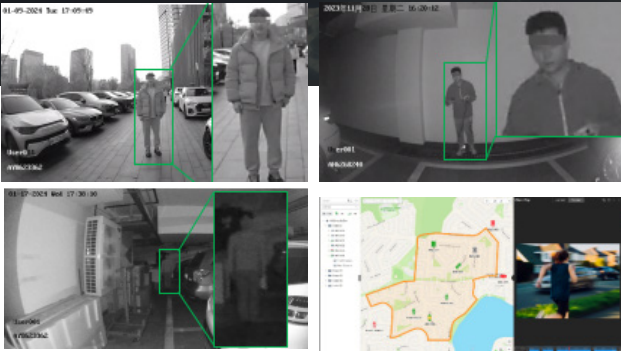




**Quantech**  
System Worldwide

# Enforce ProVision Highend Bodyworn Camera for Personnel



Worn body cameras, often used by law enforcement officers and security personnel, are devices attached to an individual's uniform or gear to record video and audio of their interactions and surroundings. These cameras help ensure transparency and accountability, providing a record of events that can be reviewed later if needed.

Enforce ProVision is built to protect your team and prove their professionalism. With full shift recording, pre / post-recording capabilities and multiple ways to connect.

## Key Feature

- 2K recording
- The recorded videos can be uploaded to the central video platform via 4G wireless communication.
- Supports IR night vision. Even in the dark scene, the facial features of the persons in the scene can be recognized clearly.
- Tri-proof design to support all-weather filed operation.
- Built-in battery with large capacity, supporting longer working hour.
- Small size, light weight, and convenient to carry.
- Large recording button for convenient operation.
- Supports 1 to 1 and 1 to N communication

# Technical Specification

| <b>Camera</b>                         |   |
|---------------------------------------|---|
| Image Sensor                          | 1/3" progressive scan CMOS  |
| Max. Recording Resolution             | 1920 × 1080   |
| Min. Illumination                     | Color: 0.07 Lux @ (F2.2, AGC ON), 0 Lux with supplement light   |
| Day & Night                           | Switch IR cut filter automatically  |
| Zoom                                  | 4× Digital  |
| White Light                           | 1 white light(s)  |
| <b>Lens</b>                           |   |
| Focal Length                          | 2.4 mm fixed lens   |
| FOV                                   | Horizontal FOV: 135°, Vertical FOV: 75°, Diagonal FOV: 145°   |
| Aperture                              | F2.2  |
| <b>Video</b>                          |   |
| Video Compression                     | H.264,H.265   |
| Video Format                          | MP4,PS  |
| Main Stream                           | 60 Hz: 30 fps (1920 × 1080, 1280 × 720, 720 × 576)  |
| Sub-Stream                            | 30 fps (1280 × 720, 720 × 576)  |
| Pre-record & Post-record              | Pre-record: 10 s,<br>Post-record: 60 s  |
| <b>Audio</b>                          |   |
| Audio Compression for Video Recording | G722_1,AAC  |
| Audio Compression for Audio Recording | PCM   |
| Audio Compression for Group Intercom  | G711_A,G711_MU,G722_1   |
| Audio Bit Rate                        | G711_A(64 kbps) ,G711_MU(64 kbps),G722_1(16 kbps) ,AAC(64 kbps),PCM(128 kbps)   |
| <b>Image</b>                          |   |
| Image Format                          | JPEG  |
| <b>Screen</b>                         |   |
| Display Resolution                    | 320 × 240   |
| Screen Size                           | 2.0"  |
| Touchscreen                           | Supported   |
| <b>Storage</b>                        |   |
| RAM                                   | 128 MB  |
| ROM                                   | 32 GB by default, 64/128/256 GB optional  |
| <b>IR</b>                             |   |
| IR Range                              | Up to 10 m  |
| IR Wavelength                         | 850 nm  |
| <b>Wireless Network</b>               |   |
| Wi-Fi Protocol                        | 802.11 a/b/g/n  |
| Wi-Fi Frequency Band                  | 2.412 to 2.472 GHz  |
| Cellular Network                      | Only available for models with :<br>GSM: 850/900/1800/1900,WCDMA: B1/B8,FDD -LTE: B1/B3/B4/B7/B20/B28,TDD -LTE: B34/B38/B39/B40/B41 |

|                     |  |
|---------------------|--|
| Positioning Mode    | GPS  |
| <b>Network</b>      |  |
| Protocol            | HTTPS, RTSP, NTP, FTP  |
| API                 | ONVIF (PROFILE S, PROFILE G, PROFILE T),ISAPI,SDK,ISUP   |
| <b>Interface</b>    |  |
| Audio Type          | 1 built-in mic(s),1 speaker(s)   |
| Indicator           | 2 indicator(s) for charging/working/recording/exception  |
| Button              | Power,Video recording,Audio recording,Picture capture,PTT,SOS,Fn   |
| SIM Card            | Only available for models with /GLE:<br>1 Nano-SIM card(s)   |
| Charging Interface  | Type-C, Pin connection   |
| USB                 | 1 USB 2.0 port(s)  |
| <b>General</b>      |  |
| Operating Condition | -20 °C to 55 °C (-4 °F to 131 °F). Humidity 95% or less (non-condensing)   |
| Power               | 5 VDC, 2.0 A, max. 10 W  |
| Dimensions          | 82.6 mm × 58 mm × 29 mm (3.3" × 2.3" × 1.1")   |
| Weight              | 159.5 g (without mounting) (0.4 lb.)   |
| Operating System    | Linux  |
| Client              | Hik-Connect,HikCentral Pro,HikCentral Master,HikCentral Master Lite  |
| MIC                 | Supported  |
| Speaker             | 1 built-in speaker(s), max. power consumption: 1 W, max. sound pressure level: 87 dB (10 cm)   |
| <b>Battery</b>      |  |
| Battery Type        | Lithium-ion battery, integral  |
| Capacity            | 3220 mAh   |
| Charging Time       | ≤ 4 h  |
| Battery Duration    | Up to 12h in 720p resolution <sup>1</sup>  |
| <b>Approval</b>     |  |
| RF                  | EN 300 328 V2.1.1 (BT or 2.4G),EN 62311:2008 (BT or 2.4G),EN 55032:2015,EN 61000-3-2:2014,EN 61000-3-3:2013,EN 50130-4:2011+A1:2014)           |
| EMC                 | CE-EMC: EN 55032: 2015,EN 61000-3-2: 2019,EN 61000-3-3: 2013,EN 50130-4: 2011 +A1: 2014  |
| Safety              | CB: IEC 62368-1: 2014+A11,IEC 62368-1: 2018,CE-LVD: EN 62368-1: 2014/A11: 2017,EN IEC 62368-1:2020+A11:2020,CE-LVD: EN 62368-1: 2014/A11: 2017 |
| Environment         | CE-RoHS: 2011/65/EU,WEEE: 2012/19/EU,Reach: Regulation (EC) No 1907/2006   |
| Protection          | IP68: IEC 60529-2013,MIL STD 810G  |

1: This is a basic estimation of battery working life only when recording is on. Additional power consumption should be considered when IR, GPS, and/or network connection is on.

▪ Dimension

